



2021-22 Workplan

Our Vision: A system of strong partnerships dedicated to creating accessible stroke services for the residents of Central East through evidence-based program delivery, education, and research

1. Timely & equitable regional access to prevention supports and services

Objective:

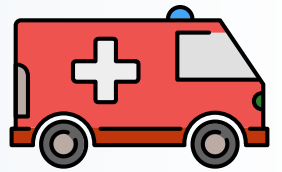
- SPC quality improvement action plans developed & implemented based on Core Elements Self Assessments



2. Timely & equitable access to hyperacute stroke treatment

Objectives:

- DTN, DIDO and evaluation processes developed at DSCs (referring sites)
- Inpatient protocols to support access to EVT implemented
- Cross-regional approach is defined and implemented to provide access to hyperacute care (including walk-in protocols)
- Repatriation/transfers and communication processes within and across regions improved



3. Timely & equitable access to an integrated system of best practice stroke care for acute, inpatient rehabilitation and community rehabilitation

Objectives:

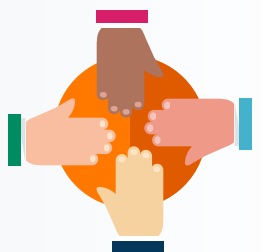
- Plan to ensure access to stroke unit care for all areas of the Central East Stroke region
- Plan to ensure access to in-home and outpatient community-based stroke rehabilitation for all areas of the Central East Stroke region



4. Stroke care services have the expertise, capacity, and processes to deliver best practice stroke care

Objectives:

- Teams that provide community stroke rehabilitation have capacity for best practice stroke care
- Cross-continuum interprofessional stroke team expertise is developed and enhanced utilizing multimodal knowledge translation strategies
- Teams are supported to embrace a culture of hopeful recovery
- Teams from the NRS reporting facilities in CESN are maximizing rehabilitation intensity minutes
- Regional specific tools that support interprofessional stroke care competencies are available
- CESN's standards of care framework is utilized by organizations to identify and implement quality improvement initiatives to support best practice stroke care across the care continuum
- Participate in evaluation/research to advance, support and monitor best practice stroke care across the care continuum



5. Stroke survivors and caregivers are enabled to live in the community supported by programs and services that optimize quality of life

Objectives:

- Community programs and services are available to support ongoing recovery and community re-integration
- Persons with stroke and caregivers are informed of community rehabilitation and re-integration supports that are available

